

# TEST REPORT

Test report

On Behalf of

**E-LIKE INDUSTRIAL (HONG KONG) LIMITED**

For

**HDMI Active Optical Cable**

**Model No.: SHDC-8810;**

**Serial Model See Page 2**

**Applicant :** E-LIKE INDUSTRIAL (HONG KONG) LIMITED

**M 905 Workingberg Commercial Building 41-47 Marble Road North  
Point, HongKong**

**Manufacturer:** E-LIKE INDUSTRIAL (HONG KONG) LIMITED

**M 905 Workingberg Commercial Building 41-47 Marble Road North  
Point, HongKong**

**Prepared By :** Shenzhen Union Test Technology Co., Ltd.

**2nd Floor, Construction Building, Xin'an Community, Bao'an, Shenzhen,  
P.R.China**

**Date of Test:** Aug. 31, 2018 ~ Sept. 06, 2018

**Date of Report:** Sept. 06, 2018

**Report Number:** UNI18N090761-1RR



**Product name:** HDMI Active Optical Cable

**Product model:**

SHDC-8810-005; SHDC-8810-010;SHDC-8810-015;  
SHDC-8810-020; SHDC-8810-025;SHDC-8810-030;  
SHDC-8810-035;SHDC-8810-040; SHDC-8810-045;  
SHDC-8810-050;SHDC-8810-055;SHDC-8810-060;  
SHDC-8810-065; SHDC-8810-070;SHDC-8810-075;  
SHDC-8810-080; SHDC-8810-085;SHDC-8810-090;  
SHDC-8810-095; SHDC-8810-100

**Trade Name:** N/A

**Applicant:** E-LIKE INDUSTRIAL (HONG KONG) LIMITED

**Address:** M 905 Workingberg Commercial Building 41-47 Marble Road North Point, HongKong

**Date of Sample Received:** Aug. 31, 2018

**Testing Period:** Aug. 31, 2018 ~ Sept. 06, 2018

**Test Requested:**

**Conclusion:**

- (1): As specified by client, to determine the Lead(Pb), Cadmium(Cd), Mercury(Hg), Hexavalent Chromium(Cr6+), Polybrominated Biphenyls(PBBs) & Polybrominated Diphenyl Ethers(PBDEs) content in the submitted sample in accordance with Regulation IEC 62321:2008 PASS
- (2): As specified by client, to determine the HBCDD content in the submitted samples in accordance with Regulation EPA 3540:1996 PASS
- (3): As specified by client, to determine the DEHP、DBP、BBP content in the submitted sample in accordance with Regulation EN 14372:2004 PASS
- (4): Based on the performed tests submitted by sample, the test results comply with the limits as set by directive(EU)2015/863-Amendment of EU RoHs Directive 2011/65/EU(RoHs2.0)Annex II.

Checked By:

Date: Sept. 06, 2018



Approved By:

Date: Sept. 06, 2018

## Test Method:

(1) With reference to IEC 62321:2008

Testing item	Pretreatment method	Measuring instrument	MDL
Lead(Pb)	IEC 62321-5: 2013	ICP-OES	2 mg/kg
Cadmium(Cd)	IEC 62321-5: 2013	ICP-OES	2 mg/kg
Mercury(Hg)	IEC 62321-4: 2013	ICP-OES	2 mg/kg
Chromium(Cr VI)	IEC 62321:2008	UV-Vis	2 mg/kg
PBBs/ PBDEs	IEC 62321-6:2015	GC-MS	5 mg/kg

(2) With reference to EPA 3540:1996

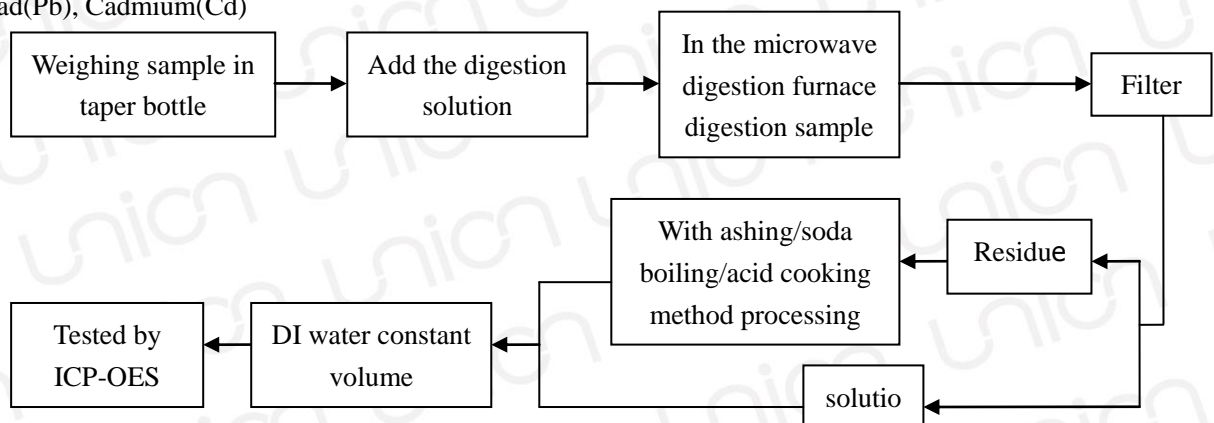
Testing item	Pretreatment method	Measuring instrument	MDL
HBCDD	EPA3540:1996	GC-MS	10 mg/kg

(3) With reference to EN 14372:2004

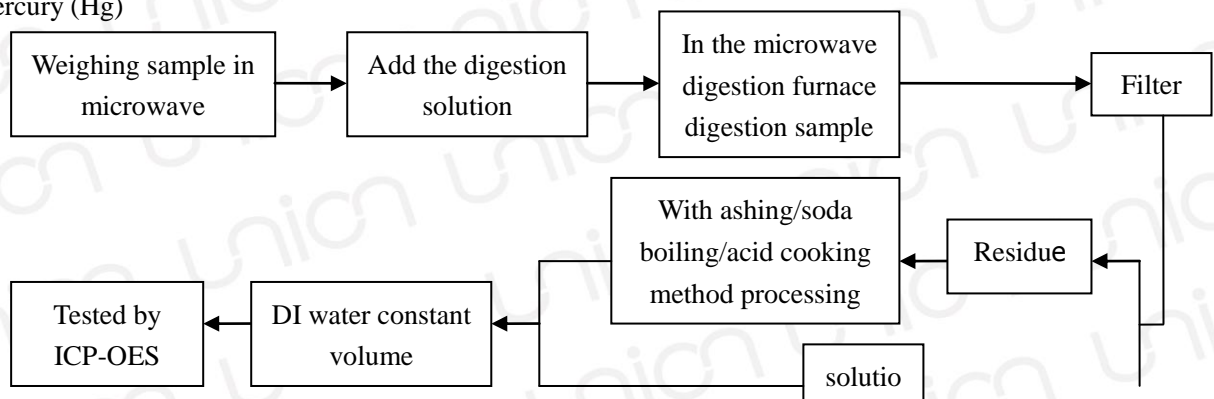
Testing item	Pretreatment method	Measuring instrument	MDL
DEHP, DBP, BBP	EN 14372:2004	GC-MS	0.003 mg/kg

## Test Flow:

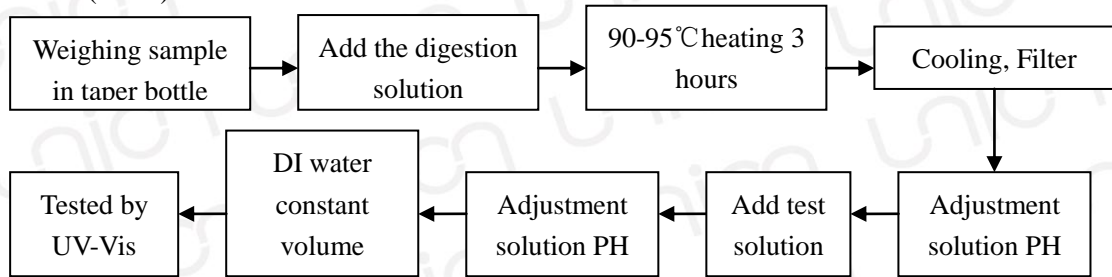
1. Lead(Pb), Cadmium(Cd)



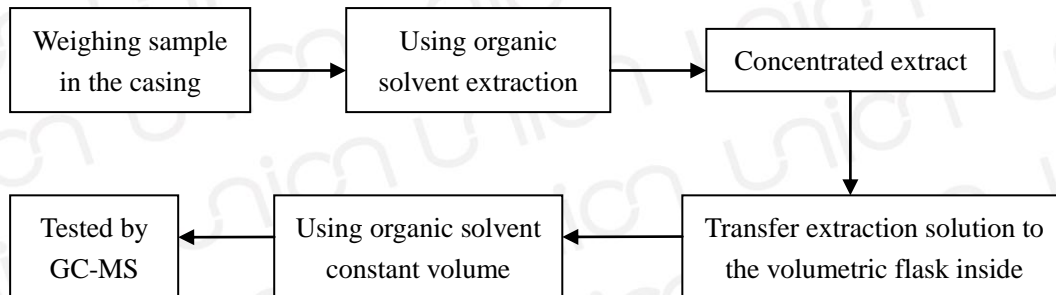
2. Mercury (Hg)



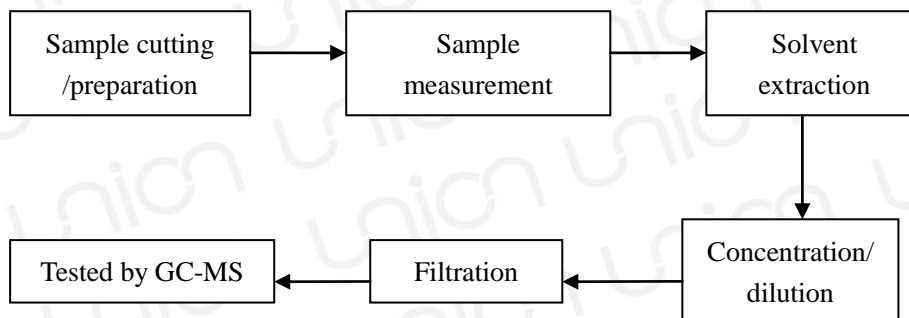
## 3. Chromium(Cr VI)



## 4. PBBs/ PBDEs



## 5. HBCDD/ DEHP/ BBP/ DBP



**Test Results:**

Testing Item	Unit	ROHS Limit	Result					
			1	2	3	4	5	6
Lead(Pb)	mg/kg	1000	N.D.	N.D.	N.D.	N.D.	N.D.	N.D.
Cadmium(Cd)	mg/kg	100	N.D.	N.D.	N.D.	N.D.	N.D.	N.D.
Mercury(Hg)	mg/kg	1000	N.D.	N.D.	N.D.	N.D.	N.D.	N.D.
Chromium(Cr VI)	mg/kg	1000	N.D.	N.D.	N.D.	N.D.	N.D.	N.D.
Sum of PBBs	mg/kg	1000	N.D.	N.D.	N.D.	N.D.	N.D.	N.D.
Monobromobiphenyl	mg/kg	/	N.D.	N.D.	N.D.	N.D.	N.D.	N.D.
Dibromobiphenyl	mg/kg	/	N.D.	N.D.	N.D.	N.D.	N.D.	N.D.
Tribromobiphenyl	mg/kg	/	N.D.	N.D.	N.D.	N.D.	N.D.	N.D.
Tetrabromobiphenyl	mg/kg	/	N.D.	N.D.	N.D.	N.D.	N.D.	N.D.
Pentabromobiphenyl	mg/kg	/	N.D.	N.D.	N.D.	N.D.	N.D.	N.D.
Hexabromobiphenyl	mg/kg	/	N.D.	N.D.	N.D.	N.D.	N.D.	N.D.
Heptabromobiphenyl	mg/kg	/	N.D.	N.D.	N.D.	N.D.	N.D.	N.D.
Octabromobiphenyl	mg/kg	/	N.D.	N.D.	N.D.	N.D.	N.D.	N.D.
Nonabromobiphenyl	mg/kg	/	N.D.	N.D.	N.D.	N.D.	N.D.	N.D.
Decabromobiphenyl	mg/kg	/	N.D.	N.D.	N.D.	N.D.	N.D.	N.D.
Sum of PBDEs	mg/kg	1000	N.D.	N.D.	N.D.	N.D.	N.D.	N.D.
Monobromodiphenyl ether	mg/kg	/	N.D.	N.D.	N.D.	N.D.	N.D.	N.D.
Dibromodiphenyl ether	mg/kg	/	N.D.	N.D.	N.D.	N.D.	N.D.	N.D.
Tribromodiphenyl ether	mg/kg	/	N.D.	N.D.	N.D.	N.D.	N.D.	N.D.
Tetrabromodiphenyl ether	mg/kg	/	N.D.	N.D.	N.D.	N.D.	N.D.	N.D.
Pentabromodiphenyl ether	mg/kg	/	N.D.	N.D.	N.D.	N.D.	N.D.	N.D.
Hexabromodiphenyl ether	mg/kg	/	N.D.	N.D.	N.D.	N.D.	N.D.	N.D.
Heptabromodiphenyl ether	mg/kg	/	N.D.	N.D.	N.D.	N.D.	N.D.	N.D.
Octabromodiphenyl ether	mg/kg	/	N.D.	N.D.	N.D.	N.D.	N.D.	N.D.
Nonabromodiphenyl ether	mg/kg	/	N.D.	N.D.	N.D.	N.D.	N.D.	N.D.
Decabromodiphenyl ether	mg/kg	/	N.D.	N.D.	N.D.	N.D.	N.D.	N.D.
Hexabromocyclododecane (HBCDD)	mg/kg	1000	N.D.	N.D.	N.D.	N.D.	N.D.	N.D.
Bis-(2-ethylhexyl) Phthalate (DEHP)	mg/kg	1000	N.D.	N.D.	N.D.	N.D.	N.D.	N.D.
Benzylbutyl Phthalate (BBP)	mg/kg	1000	N.D.	N.D.	N.D.	N.D.	N.D.	N.D.
Dibutyl Phthalate (DBP)	mg/kg	1000	N.D.	N.D.	N.D.	N.D.	N.D.	N.D.

**Sample Description:**

1. Black plastic
2. Black leather
3. Wire core
4. Screw
5. HDMI metal mouth
6. PCB

Testing Item	Unit	ROHS Limit	Result					
			7	8	9	10	11	12
Lead(Pb)	mg/kg	1000	N.D.	N.D.	N.D.	N.D.	/	/
Cadmium(Cd)	mg/kg	100	N.D.	N.D.	N.D.	N.D.	/	/
Mercury(Hg)	mg/kg	1000	N.D.	N.D.	N.D.	N.D.	/	/
Chromium(Cr VI)	mg/kg	1000	N.D.	N.D.	N.D.	N.D.	/	/
Sum of PBBs	mg/kg	1000	N.D.	N.D.	N.D.	N.D.	/	/
Monobromobiphenyl	mg/kg	/	N.D.	N.D.	N.D.	N.D.	/	/
Dibromobiphenyl	mg/kg	/	N.D.	N.D.	N.D.	N.D.	/	/
Tribromobiphenyl	mg/kg	/	N.D.	N.D.	N.D.	N.D.	/	/
Tetrabromobiphenyl	mg/kg	/	N.D.	N.D.	N.D.	N.D.	/	/
Pentabromobiphenyl	mg/kg	/	N.D.	N.D.	N.D.	N.D.	/	/
Hexabromobiphenyl	mg/kg	/	N.D.	N.D.	N.D.	N.D.	/	/
Heptabromobiphenyl	mg/kg	/	N.D.	N.D.	N.D.	N.D.	/	/
Octabromobiphenyl	mg/kg	/	N.D.	N.D.	N.D.	N.D.	/	/
Nonabromobiphenyl	mg/kg	/	N.D.	N.D.	N.D.	N.D.	/	/
Decabromobiphenyl	mg/kg	/	N.D.	N.D.	N.D.	N.D.	/	/
Sum of PBDEs	mg/kg	1000	N.D.	N.D.	N.D.	N.D.	/	/
Monobromodiphenyl ether	mg/kg	/	N.D.	N.D.	N.D.	N.D.	/	/
Dibromodiphenyl ether	mg/kg	/	N.D.	N.D.	N.D.	N.D.	/	/
Tribromodiphenyl ether	mg/kg	/	N.D.	N.D.	N.D.	N.D.	/	/
Tetrabromodiphenyl ether	mg/kg	/	N.D.	N.D.	N.D.	N.D.	/	/
Pentabromodiphenyl ether	mg/kg	/	N.D.	N.D.	N.D.	N.D.	/	/
Hexabromodiphenyl ether	mg/kg	/	N.D.	N.D.	N.D.	N.D.	/	/
Heptabromodiphenyl ether	mg/kg	/	N.D.	N.D.	N.D.	N.D.	/	/
Octabromodiphenyl ether	mg/kg	/	N.D.	N.D.	N.D.	N.D.	/	/
Nonabromodiphenyl ether	mg/kg	/	N.D.	N.D.	N.D.	N.D.	/	/
Decabromodiphenyl ether	mg/kg	/	N.D.	N.D.	N.D.	N.D.	/	/
Hexabromocyclododecane (HBCDD)	mg/kg	1000	N.D.	N.D.	N.D.	N.D.	/	/
Bis-(2-ethylhexyl) Phthalate (DEHP)	mg/kg	1000	N.D.	N.D.	N.D.	N.D.	/	/
Benzylbutyl Phthalate (BBP)	mg/kg	1000	N.D.	N.D.	N.D.	N.D.	/	/
Dibutyl Phthalate (DBP)	mg/kg	1000	N.D.	N.D.	N.D.	N.D.	/	/

**Sample Description:**

7. Silver metal sheet
8. Capacitance
9. Resisittance
10. White words



Notes:

1mg/kg=1ppm = 0.0001%

N.D. = Not Detected (<MDL)

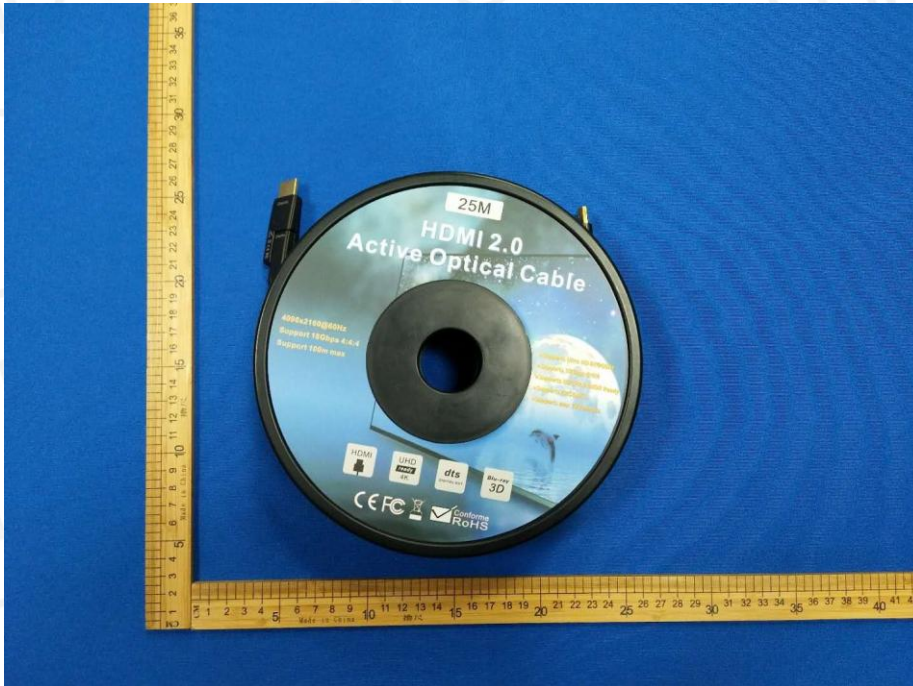
MDL = Method Detection Limit

/=Not Regulated

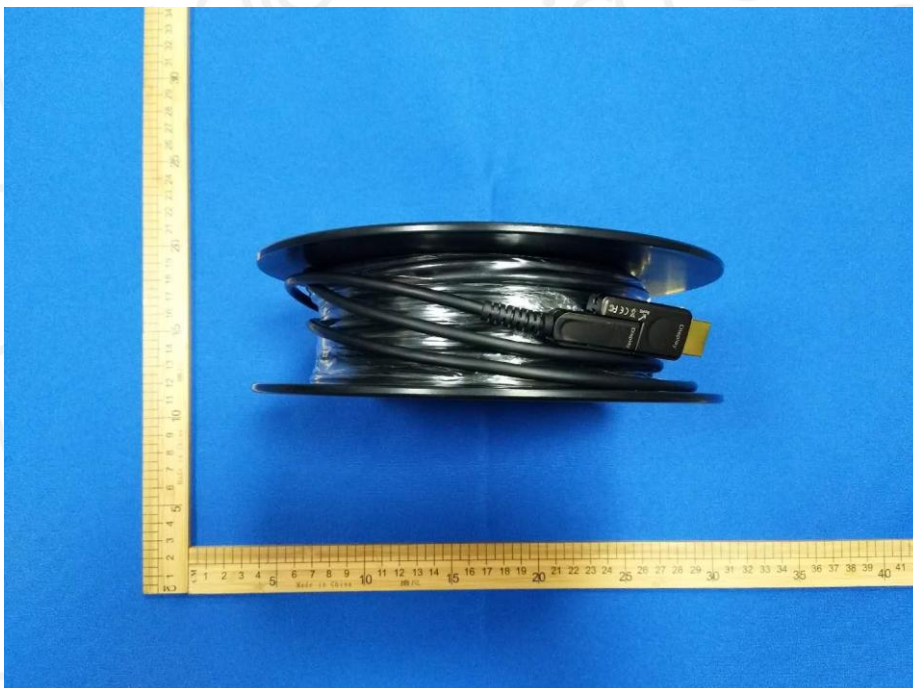
---=Not Applicable

### Breakdown of product

Sample photo: 1



Sample photo: 2



-----End of report -----